

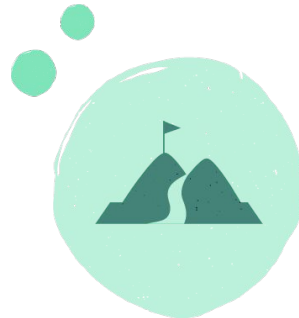
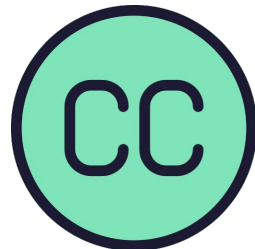
DOVE TROVARE E COME SELEZIONARE

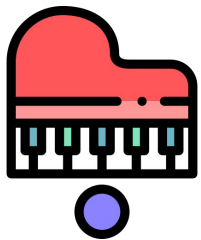
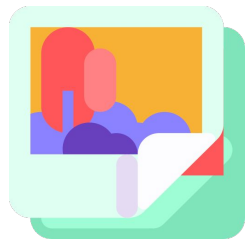
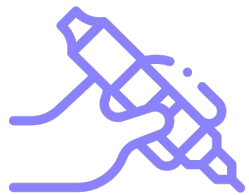
Risorse digitali da utilizzare liberamente

Veronica Ruberti - Riconessioni

Costruire le **mie attività didattiche** con strumenti digitali e **avere il diritto di diffonderle pubblicamente**

Per poter vincere questa sfida è necessario conoscere le licenze aperte e Creative Commons





POSSO USARE L'IMMAGINE?

SI

SI, MA:

NO

- DEVO CITARE CHI L'HA CREATA
- NON POSSO MODIFICARLA
- NON POSSO USARLA PER SCOPI COMMERCIALI



PUBBLICO DOMINIO

...

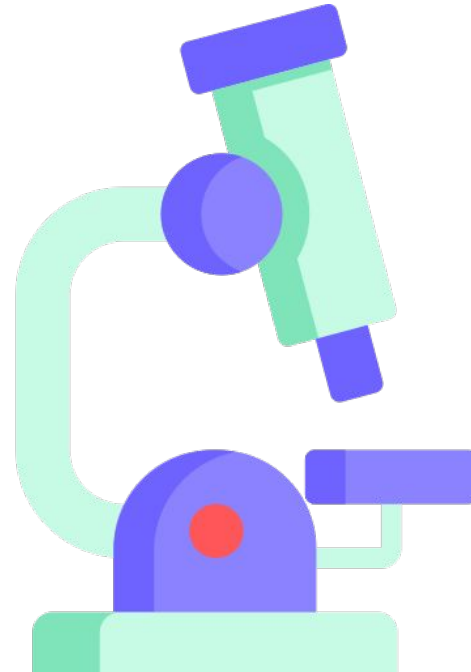


CREATIVE COMMONS

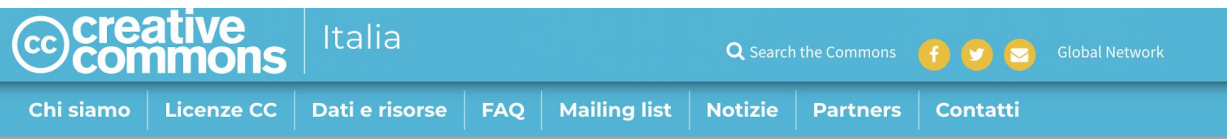


DIRITTO D'AUTORE

DOVE TROVARE COME SELEZIONARE?



DOVE TROVARE COME SELEZIONARE?



PUBBLICA LE TUE CREAZIONI, LEGALMENTE

CERCA MUSICA, FOTOGRAFIE AD ALTRO.

DONATE



NUOVO PROGETTO TRA IL
CAPITOLO ITALIANO E
WIKIMEDIA ITALIA: Coordi-
namento/Sportello Creative
Commons

Digitalizzazione del patri-
monio culturale: Creative
Commons prende parte alla
consultazione online pro-
mossa dalla Commissione
Europea.

PAUSA ESTIVA

PROTOCOLLO DI INTESA
TRA IL CAPITOLO ITALIANO
DI CC E MATERA HUB – COL-
LABORATION BETWEEN CC
ITALIAN CHAPTER AND
MATERAHUB

Link:
creativecommons.it

Only 1% of people reading this will donate. Be one of them and help us sustain CC Search.

[Yes, I'll donate now](#)[Not today](#)

SEARCH FOR CONTENT TO REUSE

Browse over 500 million images, available for reuse

Tree

All our content is under Creative Commons licenses or in the public domain. [Learn more](#) about CC licenses and tools.

I want something I can

- Use commercially Modify or adapt

Brooklyn Museum



rawpixel

Bē



RIJKS MUSEUM

PHYLOPIC



Link: creativecommons.it

FILTER RESULTS BY

Hide filters



Tree

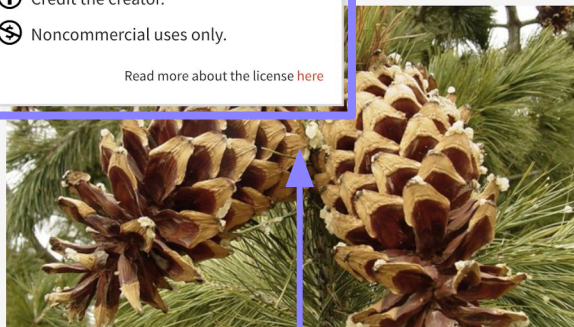
SEARCH

Use

- Use commercially
- Modify or adapt

License or Public Domain

- CC0
- Public Domain Mark
- BY
- BY-SA
- BY-NC
- BY-ND
- BY-NC-SA
- BY-NC-ND



License CC BY-NC

- Credit the creator.
- Noncommercial uses only.

[Read more about the license here](#)

Source

- Animal Diversity Web
- Biodiversity Heritage Library
- Brooklyn Museum
- Culturally Authentic Pictorial Lexicon

Scelgo **qui** la licenza adatta alle mie esigenze

Clicco per scoprire informazioni sulla licenza



File:Blue Pine (Pinus wallichiana) at Bhandakthathaatch (8000 ft) | IMG 7363.jpg

by J.M.Garg

Reuse Information

License

This image was marked with a [CC BY-SA 3.0](#) license.

- Credit the creator.
- Share adaptations under the same terms.

Read more about the license [here](#)

Credit the Creator

Rich Text HTML Plain text

"File:Blue Pine (Pinus wallichiana) at Bhandakthathaatch (8000 ft) | IMG 7363.jpg" by J.M.Garg is licensed under [CC BY-SA 3.0](#)

Copy

GO TO IMAGE'S WEBSITE

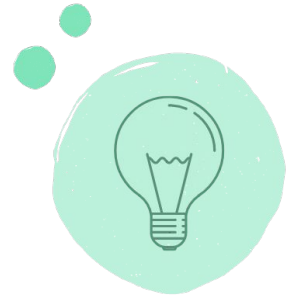
Verifico **qui** la
licenza e le
condizioni di
utilizzo

Copio **qui** il
testo da
utilizzare per
attribuire
l'opera

Clicco **qui** per scaricare
l'immagine

Posso cercare materiali “liberi di diritto d’autore” negli **archivi digitalizzati Online**

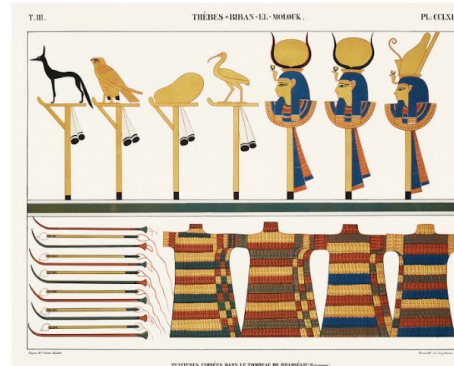
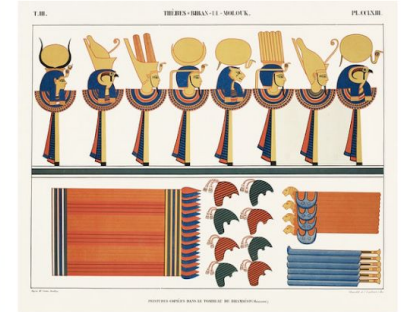
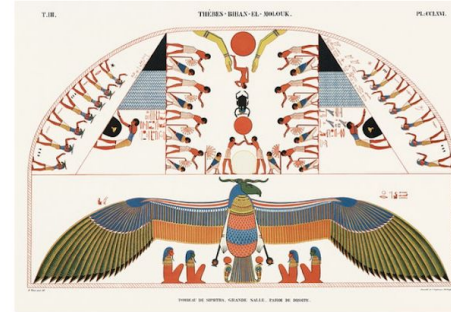
Trovo quello che mi serve per il mio progetto, al contempo scopro **vastità e bellezza** degli archivi e **patrimonio culturale**.



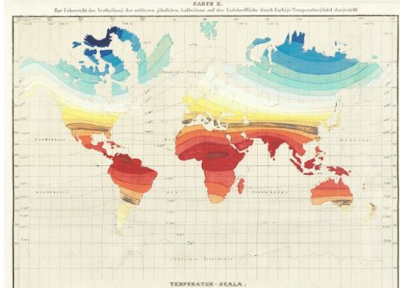
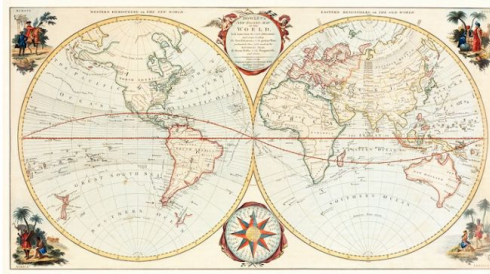
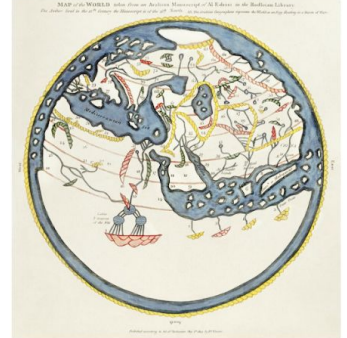
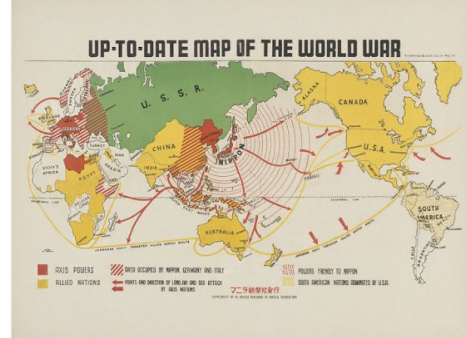
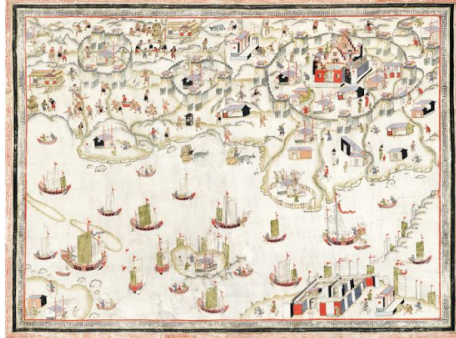
Biodiversity Heritage Library



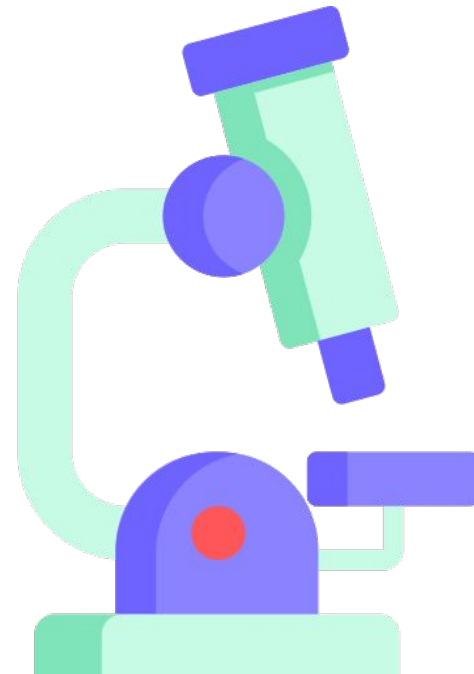
New York Public Library



The Metropolitan Museum of Art



DOVE TROVARE COME SELEZIONARE?



rawpixel

Free Premium

Public Domain

Seleziono qui le opere in **Publico Dominio**

Public Domain

Best Public Domain Vintage Design Resources with a CC0 License * Photos and Graphic Illustrations

Q Start searching..

Images ▾

Cerco qui per **parola chiave**
oppure seleziono sotto la
categoria

Trending Popular New

All

rawpixel

Botanical

Animals

Artists

Ornament

Japanese

World

Photography

Graphic Design

Patti >



Wassily Kandinsky



Theodorus "Theo" van
Hoytema



Samuel Jessurun de
Mesquita



Art Nouveau Artworks
by Alphonse Maria...



Mary Cassatt



Juglans tomentosa or Mocker Nut Hickory pl. 6 (1819) from *The North American sylvia* by **François André Michaux**. Original from The Beinecke Rare Book & Manuscript Library. Digitally enhanced by rawpixel.

Less

[Free](#) Public Domain CC0 Image

ID : 2090416

Jpeg

Tiff

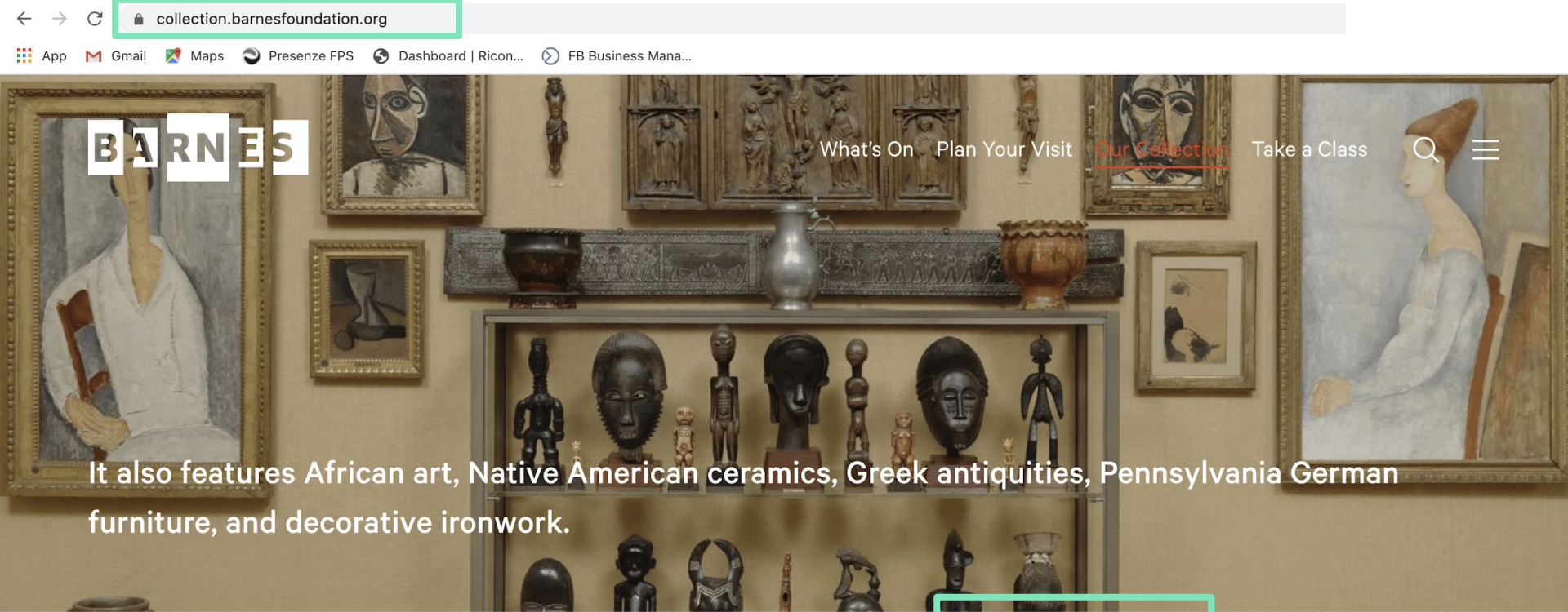
Web size Jpeg 776 x 1200 px | 300 dpi

Original size Jpeg 2173 x 3362 px | 300 dpi

[View license](#)

We have made this image available free to the public domain [i](#)






Redownload



BARNES

What's On | Plan Your Visit | Our Collection | Take a Class | Search | Menu

It also features African art, Native American ceramics, Greek antiquities, Pennsylvania German furniture, and decorative ironwork.

 COLORS |  LINES |  LIGHT |  SPACE |  **SEARCH COLLECTION**

Search a keyword, artist, room number, and more

Search

Culture ▾ | Year ▾ | Category ▾ | Room ▾ | Copyright ▾ | Artist

EVOLUZIONE

Per approfondire materiale **audio e suono in Creative commons** >



Webinar #Riconessioni **Creazione contenuti digitali: suono e voce**
[Scopri di più qui!](#)

Per scoprire **attività didattiche** per la classe e archivi online per ogni **disciplina** >



Webinar #Riconessioni **Laboratorio di creatività digitale**
[Scopri di più qui!](#)

COMPETENZE ACQUISITE

Abbiamo imparato a:

- Formulare strategie di ricerca per trovare e selezionare risorse digitali
- Considerare le condizioni e le restrizioni che possono limitare l'uso e il ri-uso di risorse digitali
- Valutare l'efficacia di una risorsa in relazione agli obiettivi di apprendimento

([DigCompEdu](#), area Risorse digitali)

