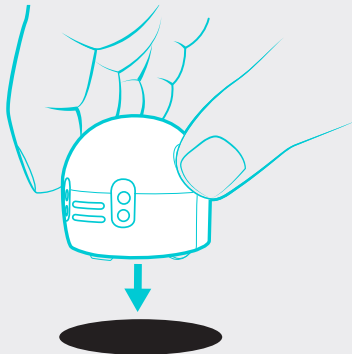


It is important to calibrate Ozobot before each session and/or when you change play surfaces. Calibration helps improve Ozobot's code and line reading accuracy.

## CALIBRATION TIPS

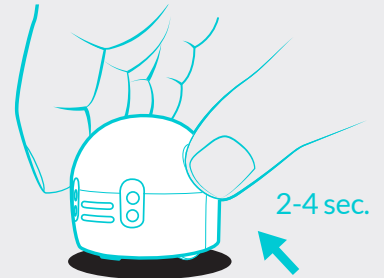
### PAPER CALIBRATION

**1** Make sure Ozobot is powered off, then place it in a black circle slightly bigger than Ozobot. If you are using markers, create this circle using a black marker.

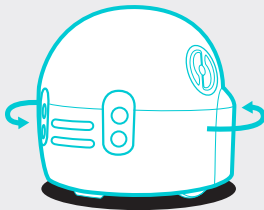


**2**

Press & hold Ozobot's Power Button for 2-4 sec. until top light blinks white. Then, release Power Button.

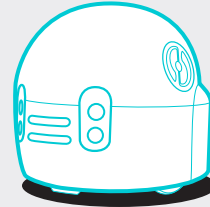


**3**



Ozobot blinks green when calibrated. If Ozobot blinks red, start over from step 1. Evo also spins during calibration.

**4**

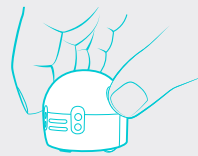


Press the Power Button to turn Bit back on. Evo powers on automatically after calibrating.

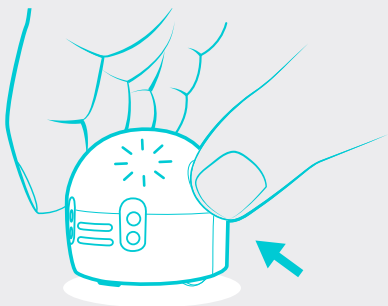
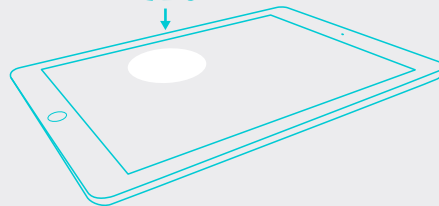
### DIGITAL CALIBRATION



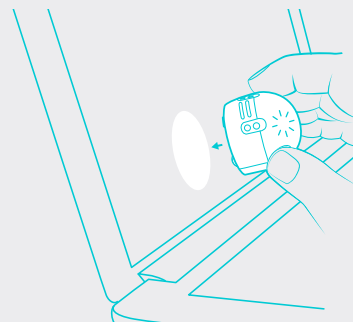
Set your screen brightness to 100% and make sure the auto-brightness feature is turned off on your tablet or computer screens.



Place Ozobot against a white section of the screen (i.e. the calibration circle in OzoBlockly)



Press & hold Ozobot's Power Button for 2-4 sec. until top light blinks white. Then, release Power Button.



When Ozobot blinks green, it means that it has successfully calibrated. Start over if Ozobot blinks red.